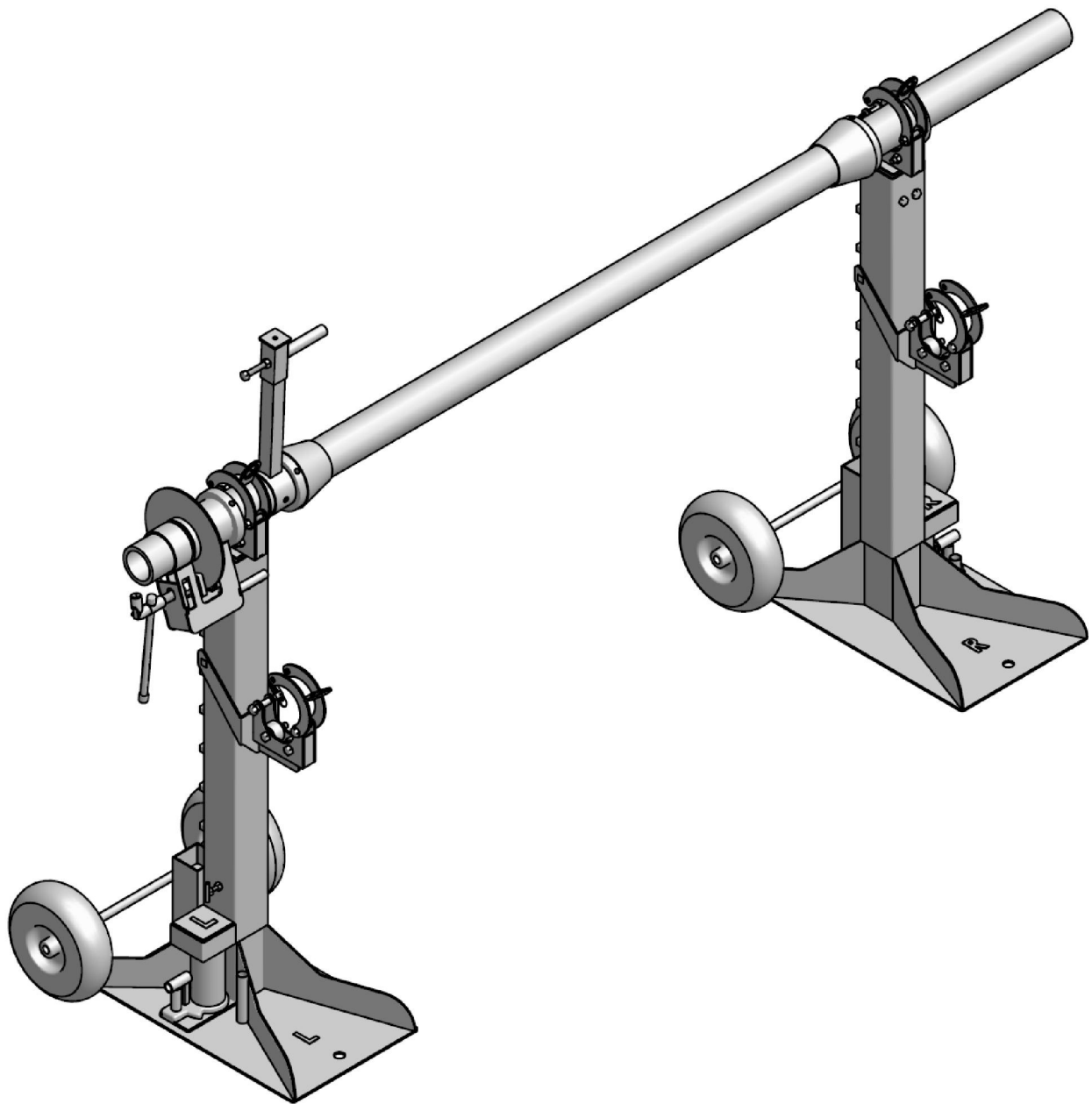
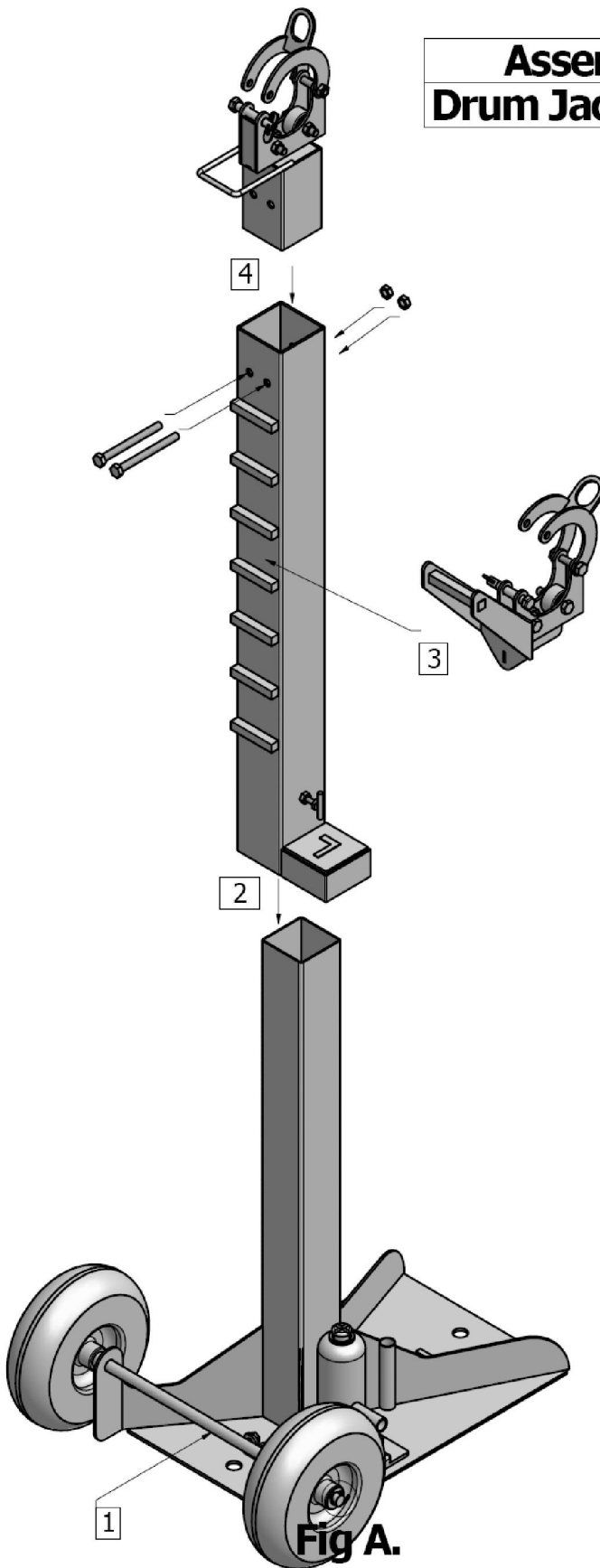


Instruction Manual Drum Jack Stand, DJS-58T



Assembly Instructions 1

Drum Jack Stand base, DJS-58T



Ins.	DESCRIPTION
1	Slide a wheel onto the axle followed by a spacer. Insert axle into and through the 2 guide holes and slide the second spacer followed by the second wheel onto the axle. Both wheels now should be on the outside of the supports. Slide a washer after the second wheel and insert the split pin into the hole and bend over as in Fig A. Slide Spacer onto each end of axle. Fit Wheels on followed by washers then lock with split pin as shown. Before inserting the middle section, read 'Assembly Instruction 2' instruction 2.
2	Insert the outer upright tube over the fixed upright tube on the base. The spacer should be facing backwards or towards the wheels with the heel over the bottle jack. Both the outer upright and the base plate have been clearly marked with an 'L' and 'R'. Fit 'L' to 'L' and 'R' to 'R'.
3	Slide front roller assembly onto the upright tube. Note: Rollers must face away for the wheels.
4	Insert top roller assembly into top of the outer tube and fix with bolts provided with handles facing backwards towards wheels.

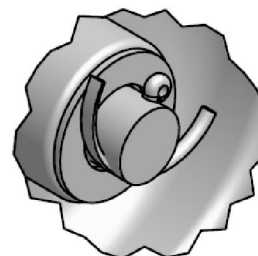


Fig A.

Assembly Instructions 3

Disc Brake (DB-900) and Fixing Arm (DFA-900)

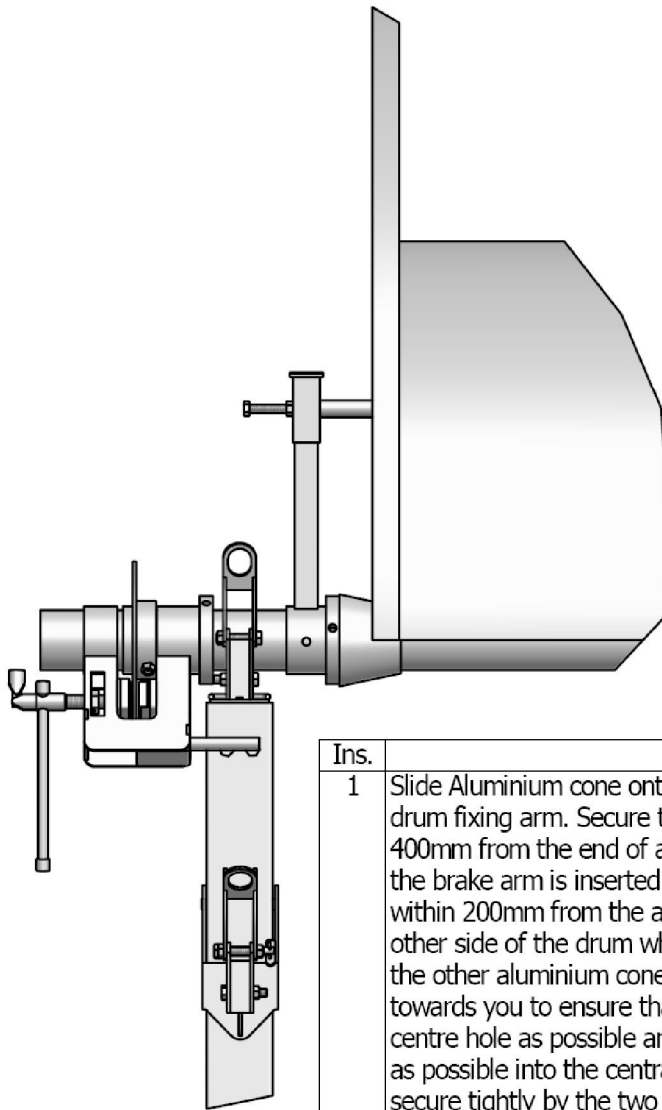
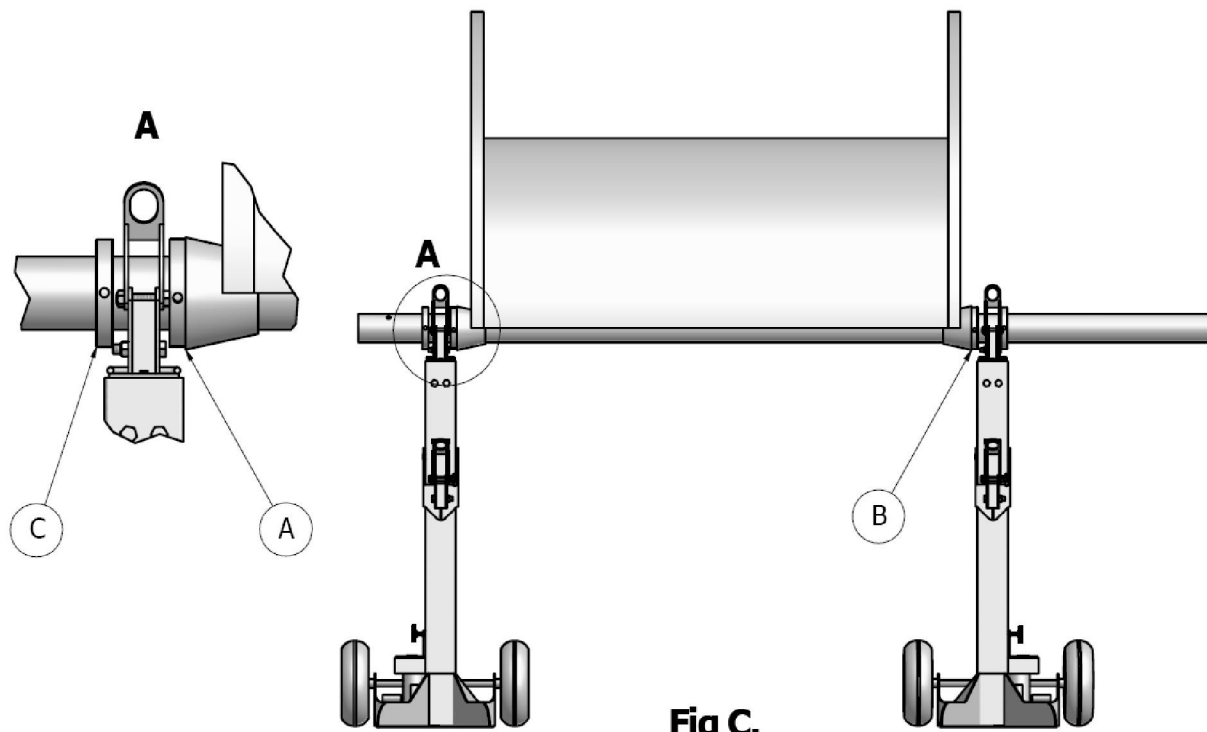


Fig. B

Ins.	DESCRIPTION
1	Slide Aluminium cone onto the axle (tapered end first), followed by the drum fixing arm. Secure the fixing arm to the axle at the inner most hole 400mm from the end of axle. Push axle through the drum barrel ensuring the brake arm is inserted into the drive hole in the flange (should be located within 200mm from the axle). Slide a locking collar onto the axle. From the other side of the drum where the axle protrudes through the flange, slide the other aluminium cone and another collar onto the axle. Pull the axle towards you to ensure that the cone on the other side is as far into the centre hole as possible and push the aluminium cone on your side as tightly as possible into the central hole. Move the fixing collar up to the cone and secure tightly by the two M12 grub screws.
2	We recommend at this point you position the uprights on either side of the drum as close as possible to the flanges. The collar sitting behind the brake arm should now be slid up to the side of the top assembly of that upright and tightened. ** You are now ready to install the disc brake assembly**
3	Using a jack handle, lift the brake assembly with the disc in the middle and insert the end of the handle into the end of the axle. Now slide the brake assembly and disc onto the axle. Depending on the direction of your drum and whether you want to pull from under or over the barrel will depend on which side of the upright you place the brake assembly locking arm. **This arm is meant to rest against the side of the upright**
4	Secure the disc with the high tensile bolt provided at the end hole.


Fig C.

Ins.	DESCRIPTION
1	Slide one aluminium cone tapered end first followed by a collar onto the axle. Secure the collar with the M12 grub screw approximately 320mm from the end of the axle (A). Push axle through the drum barrel and secure the other aluminium cone tightly into the centre hole of the drum with the other collar (B). Place uprights as shown in figure C. The outer collars are used to stop the lifting uprights from moving whilst pulling (C).
2	The axle is normally 1220mm from the ground when the outer tube is at its lowest, 1290mm with the bottle jack screw extended and 1440mm with jack fully extended. Measure the drum centre hole from the ground. If you require more than 130mm lift, extend the centre of the piston to the required height before placing the uprights into position. Further lift of 250mm can be achieved by inserting the extension tube between the heel and the bottle Jack. To lift drum off the ground, pump bottle jacks.
3	The DJS-58T has been certified to lift 8 tonnes with the use of both uprights. When placing the uprights on either side of the drum flanges the bottle jacks must be to the outside so that they are free to operate. It is important to keep lifting uprights as close to the drum flanges as possible. Never unroll the cable off the drum without closing the retaining arms over the axle and lock with the anti-luce provided. The Drum Jack Stand, DJS-58T, have been designed for use on flat ground only. The manufacturer recommends that no more than 4 tonnes be lifted by the front roller assemblies. In the event that another axle other than the one provided is used the wall thickness must be a minimum of 10mm and under no circumstances must a solid bar be used.
4	The manufacturer will not accept any liabilities should this equipment be operated in any other manner than that stated.