



# 06

# Flexible connectors

## **Flexible Laminated Connectors**

- > Aluminium
- > Copper

## **Flexible Braid Connectors**

- > Flat
- > Round
- > Round Insulated



Flexible Connectors

Type FL\_A - Aluminium

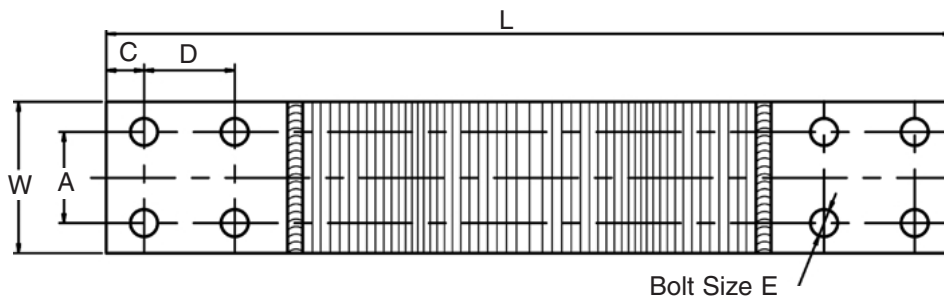


Fig. 1

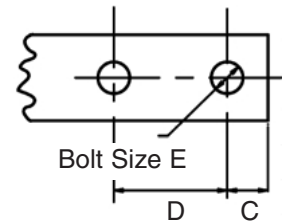


Fig. 2

Designed for flexible end to end connections between rectangular busbars or connections between busbars and terminal palms. Connectors consist of high conductivity aluminium laminates pre-formed to allow movement during expansion of the busbar system. The ends of the laminates are welded to solid aluminium terminals. Laminated connectors of other sizes and forms can be made to customers' specifications.

Table based on 40°C ambient plus 30°C maximum temperature rise.

Cat. No.	Fig. No.	Dimensions in Millimetres						Approx. Thickness	Approx. DC Rating Amp
		A	C	D	E	W	L		
FL2A 600	2	-	19	40	M12	51	300	10	600
FL3A 800	1	40	19	40	M12	76	360	12	800
FL4A 800	1	50	25	50	M12	102	400	10	800
FL4A 1200	1	50	25	50	M12	102	400	12	1200
FL4A 1600	1	50	25	50	M12	102	400	16	2000

**Note:** Other lengths and drillings to customer specifications are available.

Flexible Connectors

Type FL\_C - Copper

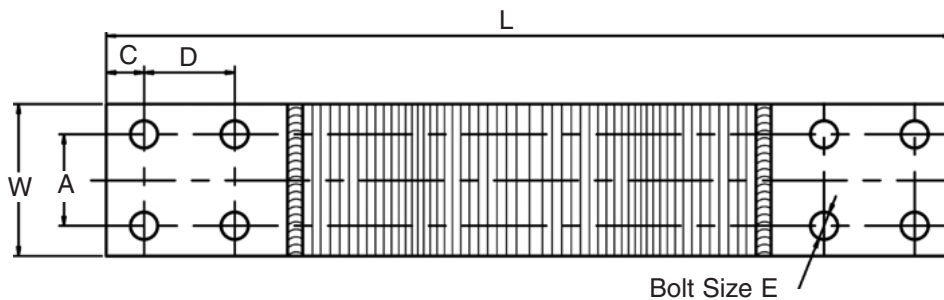


Fig. 1

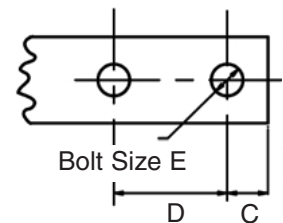


Fig. 2

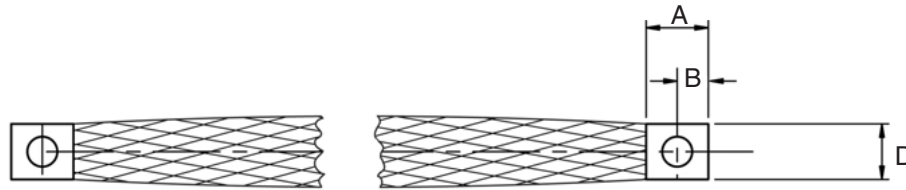
Designed for flexible end to end connections between rectangular busbars or connections between busbars and terminal palms. Connectors consist of a series of high conductivity copper laminates pre-formed to allow movement during expansion of the busbar system. Laminated connectors of other sizes and forms can be made to customers' specifications.

Cat. No.	Fig. No.	Dimensions in Millimetres						Approx. Thickness	Approx. DC Rating Amp
		A	C	D	E	W	L		
FL2C 600	2	-	19	40	M10	51	300	9	600
FL2C 800	2	-	19	40	M10	51	300	10	800
FL2C 1200	2	-	19	40	M10	51	300	12	1200
FL3C 800	1	40	19	40	M10	76	300	9	800
FL3C 1200	1	40	19	40	M10	76	300	13	1200
FL3C 1800	1	40	19	40	M10	76	300	19	1800
FL4C 800	1	50	25	50	M12	102	400	6	800
FL4C 1200	1	50	25	50	M12	102	400	9	1200
FL4C 1800	1	50	25	50	M12	102	400	13	1800
FL4C 2400	1	50	25	50	M12	102	400	17	2400

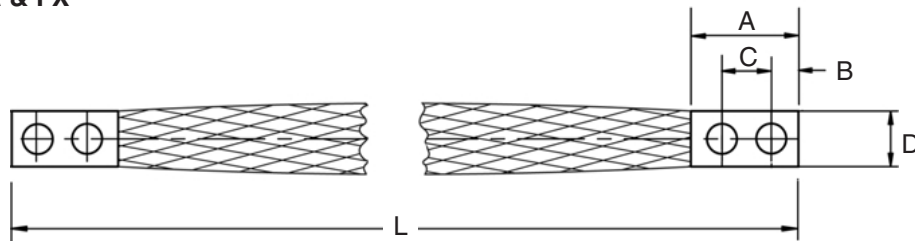
**Note:** Other lengths and drillings to customer specifications are available.

Flexible Connectors

Type F Series - Flat Braid



Type FA & FX



Type FB, FC

Series "F" flexible braid connectors consist of one or more tinned copper flat braids. Specially formed tinned copper ferrules are swaged onto the ends of the braids under high pressure to form solid rectangular terminals.

Current Ratings - Less than 30°C temperature rise above 40°C ambient temperature.

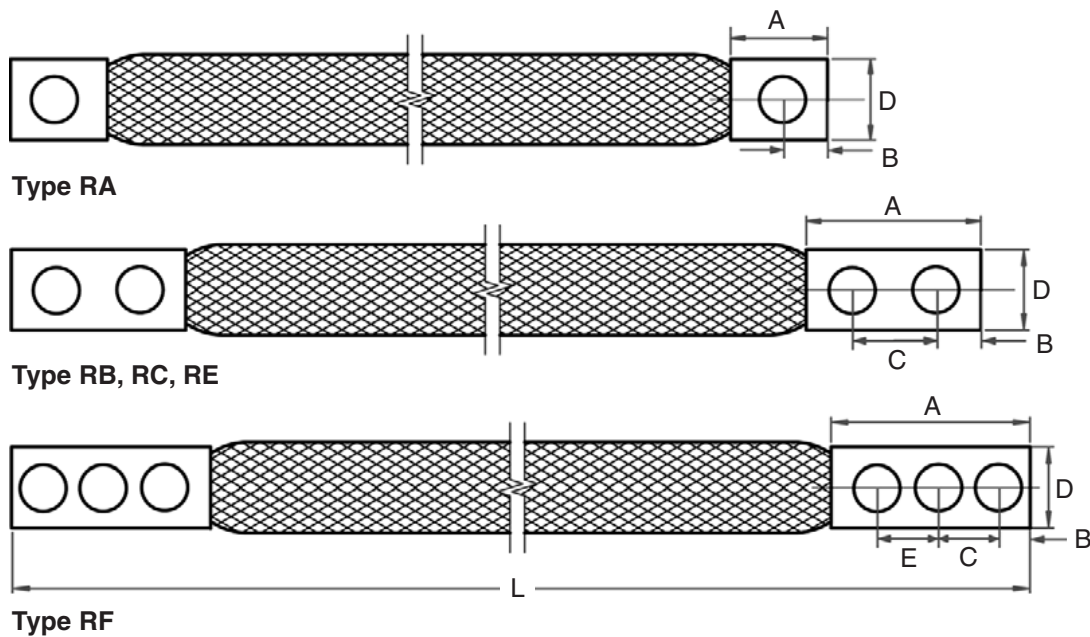
Short Time Rating - Based on maximum density being below 115 amps per mm<sup>2</sup>. Time period basis, 3 seconds.

Cat. No.	Current Rating	Short Time Current Rating	No. of Braids	Approx. Thickness	Dimensions in Millimetres					Bolt Size
					A	B	C	D	L	
FA10300	100	2600	1	6	25	14	-	25	300	M10
FA30300	300	10700	4	8	25	14	-	25	300	
FA45300	450	16100	6	10	25	14	-	25	300	
FX10300	100	2600	1	6	25	14	-	25	300	M12
FX30300	300	10700	4	8	25	14	-	25	300	
FX45300	450	16100	6	10	25	14	-	25	300	
FB10300	100	2600	1	6	54	13	22	25	300	M10
FB30300	300	10700	4	8	54	13	22	25	300	
FB45300	450	16100	6	10	54	13	22	25	300	
FC10300	100	2600	1	6	54	13	29	25	300	M10
FC30300	300	10700	4	8	54	13	29	25	300	
FC45300	450	16100	6	10	54	13	29	25	300	

**Note:** 300mm Standard length. Other lengths and drillings to customer specifications available.

Flexible Connectors

Type R Series - Round Braid



Series “R” flexible braid connectors consist of one or more tinned copper round braids with specially formed tinned copper ferrules swaged onto the ends of the braids under high pressure to form solid rectangular terminals.

Current Ratings - Less than 30°C temperature rise above 40°C ambient temperature.

Short Time Rating - Based on maximum density being below 115 amps per mm<sup>2</sup>. Time period basis, 3 seconds.

Cat. No.	Current Rating	Short Time Current Rating	No. of Braids	Approx. Thickness	Dimensions in Millimetres					Bolt Size
					A	B	C	D	L	
RA20300	200	6200	1	7.0	25	13	-	25	300	M10
RA40300	400	12500	2	8.5	25	13	-	25	300	
RB20300	200	6200	1	7.0	54	13	22	25	300	M10
RB40300	400	12500	2	8.5	54	13	22	25	300	
RC20300	200	6200	1	7.0	54	13	29	25	300	M10
RC40300	400	12500	2	8.5	54	13	29	25	300	
RC50300	500	20000	2	12.0	54	13	29	25	300	
RE70*	700	30000	3	14.0	83	19	40	40	*	M10
RE80*	800	37000	3	17.0	83	19	40	40	*	
RF60*	600	25000	2	10.5	152	25	50	49	*	M16
RF1K*	1000	50000	4	17.0	152	25	50	49	*	

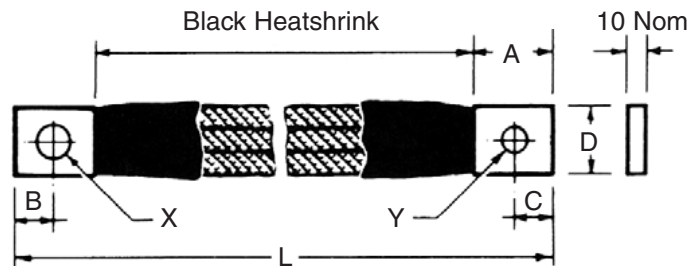
**Note:** \*OVERALL LENGTH For types RA, RB & RC - standard length 300mm. Other lengths and drillings to customer specifications are available. For types RE and RF - required length in millimetres to be added to catalogue number e.g. RE70450.

Flexible Connectors

Type RG Series - Round Braid



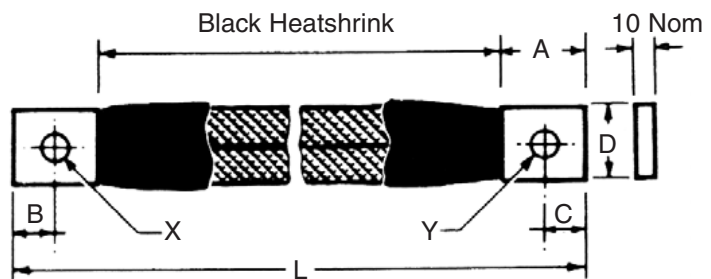
Series RG 1000 amp\* connectors consist of 3 tinned copper round braids with specially formed tinned copper ferrules swaged on to both ends under high pressure to form solid rectangular terminals.



Cat. No.	Dimensions in Millimetres					Hole Dia. mm	
	A	B	C	D	L	X	Y
RG1K400	50	25	22	50	400	27	17
RG1K415	50	25	22	50	415	27	17
RG1K440	50	25	22	50	440	27	17
RG1K450X	50	25	22	50	450	13	17
RG1K465X	50	25	22	50	465	13	17
RG1K490X	50	25	22	50	490	13	17

**Note:** \*Installed in free air. Other lengths and drillings to customer specifications are available.

Series RG 670 amp\* connectors consist of 2 tinned copper round braids with specially formed tinned copper ferrules swaged on to both ends under high pressure to form solid rectangular terminals.



Cat. No.	Dimensions in Millimetres					Hole Dia. mm	
	A	B	C	D	L	X	Y
RG67375	50	22	22	50	375	20	17
RG67385	50	22	22	50	385	20	17
RG67425	50	22	22	50	425	20	17
RG67375X	50	22	22	50	375	13	17
RG67385X	50	22	22	50	385	13	17
RG67425X	50	22	22	50	425	13	17

**Note:** \*Installed in free air. Other lengths and drillings to customer specifications are available.