

# GVK CABLE PITS



## RAIL CABLE PITS



P5PIT



PIT600



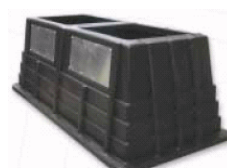
RAILPIT



J8PIT



J7PIT



Railway Double Signal Base



Railway Single Signal Base



POLYMER CONCRETE PITS



PITS P1PIT to P4PIT

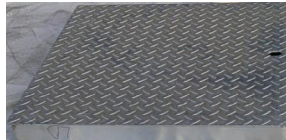


Pit Lid Lifter

Part no: MPK-500

Part No	Length mm	Width mm	Height mm
P1PIT	419	155	350
P2PIT	553	180	514
P3PIT	663	243	570
P4PIT	584	281	760
P5PIT	580	330	580
P5PITDEEP	580	338	800
J7PIT	910	440	1075
J8PIT	1240	440	834
RAILPIT	1140 dia	1140 dia	1215
PIT600	600	600	600
PIT1000	1000	1000	1000
PITPC450	450	450	450
PITPC600	600	600	600
PITPC900	900	900	600
PITPC96	900	600	600
PITPC63	600	300	600

**Available with Concrete, Steel & Heavy Duty Metal Lids**



**ARTC APPROVAL No: 08-08-10-039**