

CRITCHLEY MARKERS

K-TYPE MARKERS & CARRIER STRIPS

(Yellow Markers with Black Lettering)



K-type markers & carrier strips are ideal for identifying large cables, conduit & pipes, either before or after termination. The standard carrier has slotted ends allowing fastening with cable ties, whilst the universal carrier features a hole at one end to provide 'flag' fixing.



* Versatile marking system for cables, cable bundles & conduit

* Two styles of carrier strips holding from 7 to 18 markers

* Large characters for good legibility

* Wide range of fixing methods

K-TYPE MARKERS available in A-Z, 0-9 & Symbols.

PART No.	CABLE SIZE	CABLE DIA	MARKER LENGTH	PACK SIZE
KS65RLYW-	4.2-7.0mm ²	4.0-10mm	6mm	500
(nominate letter or number required)				

K-TYPE CARRIER STRIPS

PART No.	DESCRIPTION	CAPACITY	PACK SIZE
1132	Carrier strip	7 Digits	500
1131	Carrier strip	12 Digits	500
1130	Carrier strip	18 Digits	250



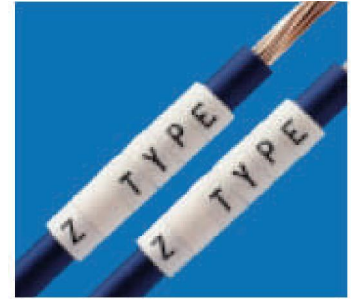
CRITCHLEY MARKERS

Z-TYPE MARKERS

available in A-Z, 0-9 & Symbols.



(White Markers with Black Lettering & Colour coding option)



Z-type markers have an expanding gusset enabling each marker size to accommodate a wide range of cable sizes.

The size range allows marking of cables from 0.5mm² to 35mm²

PART No.	CABLE SIZE	CABLE DIA	APPLICATOR	PACK SIZE
ZS09BSWE-	1.5 mm	2.5-4.0mm	1252	1000
ZS11BSWE-	2.5mm	2.9-4.7mm	1253	1000
ZS13BSWE-	4mm	3.4-5.7mm	1254	1000
ZS15BSWE-	6mm	3.8-6.3mm	1255	1000
ZS18BSWE-	10mm	4.3-6.9mm	1256	500
ZS23BSWE-	16mm	5.5-8.9mm	Not Required	500
ZS35BSWE-	25mm	7.9-12.7mm	Not Required	250

(nominate letter or number required)

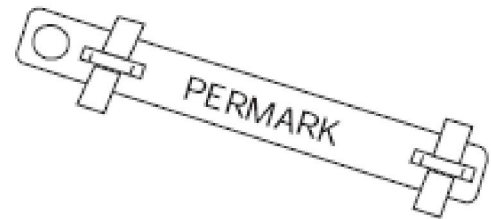
PERMARK MARKERS

These 316 stainless steel markers are pre-marked to customer requirements they have excellent resistance to weather extremes, corrosive marine and industrial atmospheres

Excellent resistance to a variety of hydrocarbons, acids, Organic chemicals, alkalis & inorganic salts.

One piece 316 stainless steel construction.

Mark will endure the lifetime of the Permark S/S marker.



ARTC APPROVAL No: 08-08-10-019