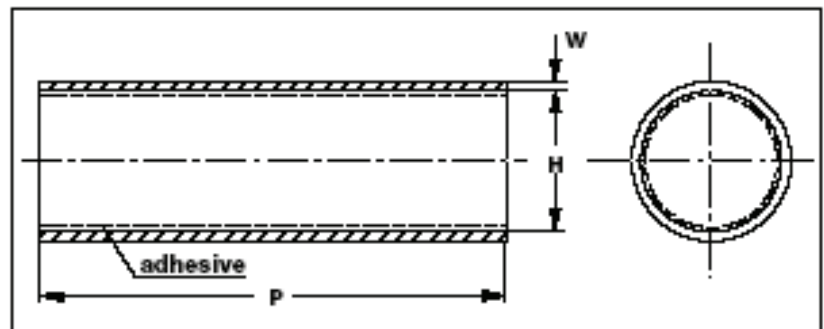


## RAYCHEM MWTM - MEDIUM WALL ADHESIVE LINED HEAT SHRINK

MWTM is a quick shrinking, medium wall, cross-linked, semi-rigid polyolefin tubing with large expansion ratios. It is available with or without a hot melt adhesive coating on the inside diameter. The MWTM sleeves are designed to insulate and encapsulate electrical connections. Typical applications include the covering of splices and electrical terminations in ambient temperatures of -30°C to +105°C. When coated with an adhesive, the inner hot melt liner simultaneously melts and flows during the shrinking process to environmentally seal a connection or splice. The adhesive bond develops excellent peel strength, depending upon substrate material composition. These sleeves provide seals with a variety of synthetic sheath materials and most metals, including lead, aluminium and steel. MWTM sleeves provide good electrical insulation and, at the same time, resist abrasion and corrosion. This material is tough and provides good mechanical support and strain relief.

**STANDARD COLOURS** Black



Ordering Size	P Length mm	Cable Application Range Diameter mm	H		W
			A Expanded Diameter	B Recovered Diameter mm	Wall Thickness After Shrinking mm
MWTM 10/3	1200	3.5-9.0	10	3	1.0
MWTM 16/5	1200	5.5-14.5	16	5	1.5
MWTM 25/8	1200	9.0-22.5	25	8	2.0
MWTM 35/12	1200	13.0-31.5	35	12	2.0
MWTM 50/16	1200	17.5-45.0	50	16	2.0
MWTM 63/19	1200	21.0-57.0	63	19	2.5
MWTM 85/25	1200	27.5-77.0	85	25	3.0
MWTM 115/34	1200	37.0-104.0	115	34	3.3
MWTM 140/42	1500	46.0-126.0	140	42	3.5
MWTM 160/50	1200	55.0-134.0	160	50	3.5
MWTM 16/5*	Metre	5.5-14.5	16	5	1.5
MWTM 25/8*	Metre	9.0-22.5	25	8	2.0
MWTM 35/12*	Metre	13.0-31.5	35	12	2.0
MWTM 50/16*	Metre	17.5-45.0	50	16	2.0

**Notes:** 1. Dimensions in millimetres  
a = as supplied  
b = after free recovery.      2. Max. longitudinal change after free recovery: -15%