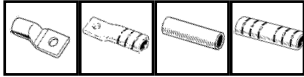


CONTENTS



ALUMINIUM LUGS AND LINKS

SECTION 2

SECTION 2	ALUMINIUM LUGS AND LINKS	15
	UNILUG FOR ALUMINIUM CABLES	16
	UNILINK ALUMINIUM	17
	ELECTRICAL JOINTING COMPOUND	17
	3 & 4 CORE SECTOR LUG	18
	ROUND BARREL SECTOR	18
	3 & 4 CORE SECTOR LINK	19
	SECTOR TO ROUND LINK	19
	CCT CONDUCTOR	20
	ALUMINIUM ROTATING LUGS	21

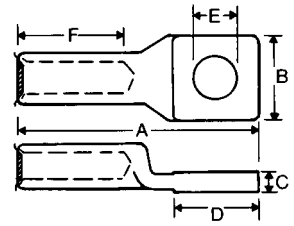
CATALOGUE INDEX

INDEX

UNILUG FOR ALUMINIUM CABLES



- 99.9% pure high conductivity aluminium
 - Forged from solid AL billets
- Solid palm, therefore eliminating the ingress of moisture
 - Pre-filled with joining compound
- Individually packed in sealed plastic bags



DESCRPT.	CAT NO.	CONDUCTOR AREA mm ²	STRANDING METRIC	STUD SIZE E	DIMENSIONS mm						CRIMPING DIE
					A	B	C	D	F	I.D.	
AG6MB AG6M6	H15100 H15101	6	7/1.04	MB M6	54	18	5	22	32	3.5	38-90AL
AG10MB AG10M6	H15103 H15104	10	7/1.35	MB M6	65	22	5	22	32	4.5	
AG16MB AG16M10	H15106 H15109	16	7/1.70	MB M10	65	22	5	22	32	5.5	
AG25MB AG25M10	H15111 H15114	25	7/2.14 19/1.35	MB M10	65	22	5	22	32	7.0	
AG35MB AG35M10	H15116 H15119	35	19/1.53	MB M10	65	22	5	22	32	8.5	
AG50MB AG50M10	H15121 H15124	50	19/1.78	MB M10	73	26	8	28	32	9.5	38-132AL
AG70MB AG70M10 AG70M12	H15126 H15129 H15130	70	19/2.14	MB M10 M12	73	26	8	28	32	11.0	
AG95MB AG95M10 AG95M12	H15131 H15134 H15135	95	19/2.52 37/1.78	MB M10 M12	80	30	10	35	32	13.0	
AG120MB AG120M10 AG120M12	H15136 H15138 H15139	120	37/2.03	MB M10 M12	80	30	10	35	32	15.0	38-173AL 40-172AL
AG150MB AG150M10 AG150M12 AG150M16	H15141 H15142 H15143 H15144	150	37/2.25	MB M10 M12 M16	90	36	11	36	30	16.5	38-220AL 40-220AL
AG185MB AG185M12 AG185M16	H15146 H15147 H15148	185	37/2.52	MB M12 M16	90	36	11	36	30	18.5	
AG240MB AG240M12 AG240M16	H15151 H15153 H15154	240	61/2.25	MB M12 M16	115	46	12	50	37	21.0	
AG300MB AG300M12 AG300M16	H15156 H15159 H15160	300	61/2.52	MB M12 M16	115	46	12	50	41	23.5	38-284AL 40-283AL
AG400MB AG400M12 AG400M16	H15162 H15165 H15166	400	61/2.85	MB M12 MB	150	54	15	54	68	26.5	
AG500MB AG500M12 AG500M16	H15168 H15171 H15172	500	61/3.20	MB M12 M16	150	54	15	54	68	29.5	40-390AL
AG630MB AG630M16	H15174 H15176	630	127/2.52	MB M16	159	60	15	60	68	33.5	

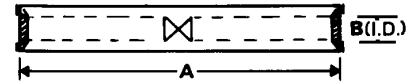
Stud size "MB" means blank palm.

800-1000mm² tube Aluminium Crimp Lugs made to approved minimum order quantities only.



UNILINK ALUMINIUM

- Solid barrier
- High conductivity Aluminium
- Prefilled with jointing compound
- Individually packed in sealed plastic bags



DESCRIPT.	CAT NO.	CONDUCTOR AREA (mm ²)	STRANDING METRIC	DIMENSIONS A (mm) B (mm)		CRIMPING DIE
AK6	H15200	6	7/1.04	70	3.5	38-90AL
AK10	H15201	10	7/1.35	70	4.5	
AK16	H15202	16	7/1.70	70	5.5	
AK25	H15203	25	7/2.14 - 19/1.35	70	7.0	
AK35	H15204	35	19/1.53	70	8.5	
AK50	H15205	50	19/1.78	70	9.5	38-132AL
AK70	H15206	70	19/2.14	70	11.0	38-173AL 40-172AL
AK95	H15207	95	19/2.52 - 37/1.78	124	13.0	
AK120	H15208	120	37/2.03	124	15.0	38-220AL 40-220AL
AK150	H15209	150	37/2.25	124	16.5	
AK185	H15210	185	37/2.52	124	18.5	38-284AL 40-283AL
AK240	H15211	240	61/2.25	124	21.0	
AK300	H15212	300	61/2.52	124	23.5	40-390AL
AK400	H15213	400	61/2.85	146	26.5	
AK500	H15214	500	61/3.20	146	29.5	40-432AL
AK630	H15215	630	127/2.52	146	33.5	
AK800	H15216	800	127/2.85	260	38.5	

Larger sizes available, subject to approved quantities.



ELECTRICAL JOINTING COMPOUND

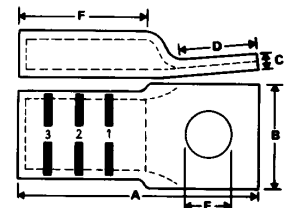
- Recommended for Aluminium connections
- Zinc particles in H2397 penetrates oxide films that form on the Aluminium surface
 - Seals out air and moisture, therefore minimising oxidation or corrosion and maximising conductivity
 - High melt point grease

CAT NO.	NO.	APPLICATION	PART	COLOUR	TUBE SIZE
H2397	4C	Conductive compound with zinc particles	Zn	KD Grey	325g

3 & 4 CORE SECTOR LUG



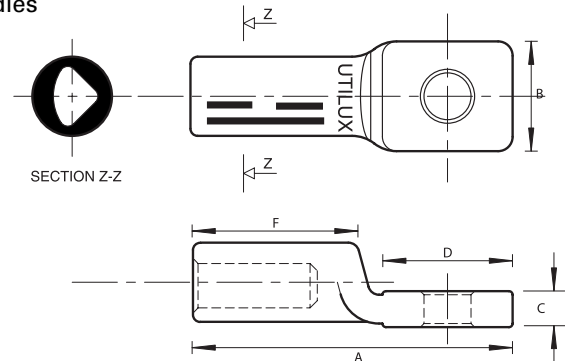
- Clear markings on barrel to indicate correct crimping sequence
- Prefilled with jointing compound
- Supplied with flat washers
 - Suit 3 core 120° or 4 core 90° solid sector aluminium conductor
- 99.9% pure, high conductivity Aluminium
- Individually packed in sealed plastic bags



DESCRIPT.	CAT NO.	CONDUCTOR AREA mm ²	STUD SIZE E	DIMENSIONS mm					TOOL NO.	DIES NEST	DIES INDENT
				A	B	C	D	F			
3 CORE											
AGS120M12	H8610	120	M12	100	31	6.9	33.5	51	38A	12	16
AGS150M12	H8611	150	M12	103	35	7.3	33.5	51	38A	12	17
AGS185M12	H8613	185	M12	115	38	7.3	37.3	59	38A	12	18
AGS240M12	H8615	240	M12	123	42	8.7	37.3	63	38A	12	19
AGS240M16	H8616	240	M16	123	42	8.7	37.3	63	38A	12	19
4 CORE											
AGI120M12	H8889	120	M12	101.6	32	6.7	34.9	53.9	38A	14	16
AGI150M12	H8890	150	M12	110.3	35	7.1	34.9	59.5	38A	14	17
AGI185M12	H8891	185	M12	115.0	40	8.3	38.1	59.5	38A	14	18
AGI240M12	H8892	240	M12	127.8	46	11.7	44.4	62.6	38A	15	19

ROUND BARREL SECTOR

- 99.9% pure high conductivity aluminium
- Forged from solid AL billets
 - Solid palm, therefore eliminating the ingress of moisture
 - Pre-filled with jointing compound
- Individually packed in sealed plastic bags
 - Hexcrimp with std Utilux dies

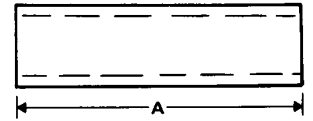


DESCRIPT.	CAT NO.	DIMENSIONS mm					CRIMPING DIE	
		A	B	C	D	F		
AG4H185M12	H50804	115	36	11	36	62	38-220AL	40-220AL
AG4H240M12	H50805	133	36	12	36	62	38-284AL	40-283AL

3 & 4 CORE SECTOR LINK



- Clear markings on barrel to indicate correct crimping sequence
 - Prefilled with jointing compound
- Suit 3 core 120° or 4 core 90° solid sector aluminium conductor
- 99.9% pure, high conductivity aluminium
- Individually packed in sealed plastic bags



DESCRIPT.	CAT NO.	CONDUCTOR AREA mm ²	mm A	TOOL NO.	NEST	DIES INDENT
3 CORE						
AKS120	H8627	120	90	38A	12	16
AKS150	H8628	150	90	38A	12	17
AKS185	H8629	185	105	38A	12	18
AKS240	H8630	240	110	38A	12	19
4 CORE						
AKI120	H8949	120	88.9	38A	14	16
AKI150	H8950	150	104.8	38A	14	17
AKI185	H8951	185	104.8	38A	14	18
AKI240	H8952	240	114.3	38A	15	19

2

SECTOR TO ROUND LINK



- Clear markings on barrel to indicate correct crimping sequence
 - Prefilled with jointing compound
- Suit 3 core 120° or 4 core 90° solid sector aluminium conductor
- 99.9% pure, high conductivity aluminium
- Individually packed in sealed plastic bags

DESCRIPT. P/N	CONDUCTOR SECTOR mm ²	CONDUCTOR ROUND mm ²	OVERALL LENGTH	ROUND END HEXCRIMP DIE	SECTOR CRIMP NEST DIE	SECTOR CRIMP INDENT DIE
3 CORE						
AK31185240	185	240	150	38-284AL	#12 NEST	#18 INDENT
AK31240300	240	300	150	38-284AL	#15 NEST	#20 INDENT
4 CORE						
AK41240300	240	300	153	38-284AL	#15 NEST	#20 INDENT

CCT CONDUCTOR



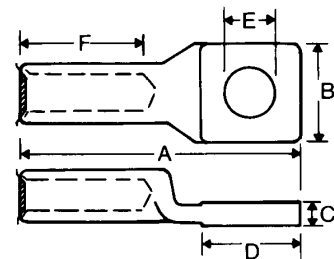
The new aluminium lugs & links are designed for use with 7/2.75 (40mmsq) Aluminium CCT conductor.

The lug is primarily used on dropper cables for pole mounted substations. An aluminium link is also provided for in line connections.

The lug and link are manufactured from 99.9% pure high conductivity aluminium. They are forged to maximise conductivity and strength.

The solid palm also eliminates the ingress of moisture whilst the plating gives added protection for outdoor use.

The lug and link are pre-filled with jointing compound, ink stamped with catalogue number and crimping details and individually packed in sealed plastic bags.



CAT NO.	CONDUCTOR SIZE	DIMENSIONS mm							CRIMPING DIE
		A	B	C	D	E	F		
LUG AG40M10ET	7/2.75 (40mmSQ)	73	26	8	28	M12	32	38-132AL	
LUG AG40M12ET	7/2.75 (40mmSQ)	70	26	8	28	M12	32	38-132AL	
LINK AK40ET	7/2.75 (40mmSQ)	70	N/A	N/A	N/A	N/A	N/A	38-132AL	



A NEW SOLUTION FOR CONNECTING UNDERGROUND ALUMINIUM CABLES

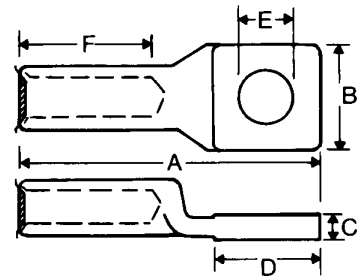


This new range of connectors for aluminium 4 core sector cable features a unique concept enabling the lug to be rotated to any desired position on the conductor, without the need to round the conductor first. The design embodies the tried and proven round barrel/hex compression die combination, giving superior connection reliability.

BENEFITS:

- The lug can be rotated to any desired position
- No need to twist conductor to correct orientation

- Minimum effort required to correctly orientate lug
- Reduces total connection time
- Suits solid and stranded conductor types
- Uses standard size hexagonal dies
- No need to round the sector cable first
- Bi-metal versions available
- No voids when crimped
- Takes two crimps on the barrel without overlapping
- Palm will fit into most receptacles found in URD system
- Supplied pre-packed with jointing compound, in sealed plastic bags
- The lug barrel has markings showing the length of insulation to be stripped
- Made from high conductivity, high strength, solid forged aluminium
- Tested to BS4579



ALUMINIUM ROTATING LUGS

DESCRIPT.	CAT NO.	CONDUCTOR AREA mm ²	DIMENSIONS mm							STUD E	CRIMPING DIE
			A	F	OD	B	C	D			
AG4HR185MB	H15353	185	112	50	34	36	12	36	MB	38-284AL	
AG4HR185M12	H15354	185	112	50	34	36	12	36	M12		
AG4HR185M16	H15355	185	112	50	34	36	12	36	M16		
AG4HR240MB	H15356	240	112	50	34	36	12	50	MB	38-284AL	
AG4HR240M12	H15357	240	112	50	34	36	12	50	M12		
AG4HR240M16	H15358	240	112	50	34	36	12	50	M16		