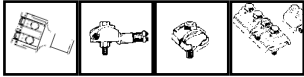


# CONTENTS



## BOLTED OVERHEAD CONNECTORS

**SECTION 6**

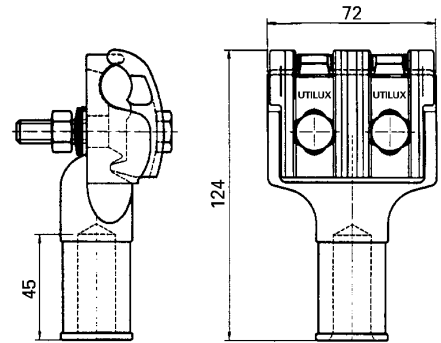
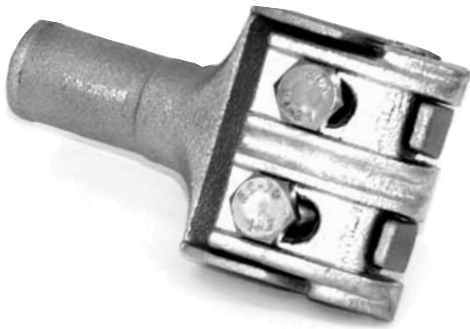
<b>SECTION 6</b>	<b>BOLTED OVERHEAD CONNECTORS</b> .....	<b>.51</b>
	GENERAL PURPOSE	
	OVERHEAD LINE TAP CONNECTOR .....	.52
	DISCONNECT TEE CLAMP .....	.52
	SERVICE CONNECTOR .....	.53
	LINE STIRRUP CLAMP .....	.53
	ELECTRICAL JOINTING COMPOUND .....	.53
	PARALLEL GROOVE CONNECTORS .....	.54
	BI-METAL PG CLAMPS –	
	DOUBLE & TRIPLE BOLT .....	.54
	ALUMINIUM PG CLAMPS – DOUBLE BOLT .....	.55
	COPPER PG CLAMPS – SINGLE BOLT .....	.55
	COPPER PG CLAMPS – DOUBLE BOLT .....	.55
	SPLIT BOLT CONNECTORS .....	.56

CATALOGUE INDEX

**INDEX**

## GENERAL PURPOSE OVERHEAD LINE TAP CONNECTOR

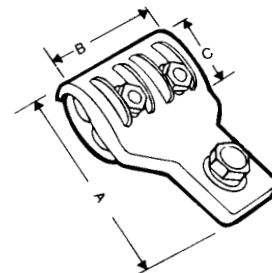
- General purpose for bare overhead conductors applications where tap is required to carry full line current
  - Combined bolted and compression connection technology
  - Special aluminium alloy body for strength and ductility
  - Integral belleville washers • Stainless Steel fasteners
- Captive nut • Contact Surfaces pre-coated with Utilux No.3G jointing compound



CAT NO.	DESCRIPTION	LINE CONDUCTOR RANGE (COND. OD)	Ø I.D. (XXY)
LTGSXXY	Line Tap Connector	6-19mm	Bore dimension $\phi$ ID eg. for a bore of 17.5mm, xxy = 175

## DISCONNECT TEE CLAMP

- All aluminium • Accepts Aluminium single hole crimp lugs



CAT NO.	CONDUCTOR RANGE O.D.	DIMENSIONS mm			BOLT DIA.	SET SCREW
		A	B	C		
TCDA19	7-19	120.0	75.0	42.0	M10 x 50	M12 X 40

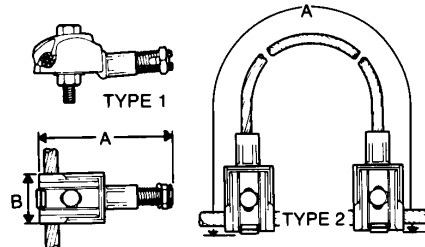
Made to minimum order only

## SERVICE CONNECTOR

- Cast high strength aluminium alloy connector identified with Catalogue No. and cable range
- Available in two configurations

**TYPE 1.** Tinned split bolt clamp compression crimped into connector body for direct service connection

**TYPE 2.** Two connectors joined by a customer nominated length of tinned 7/.104 (imperial) copper conductor (Standard is 254mm) • Available with stainless steel hardware on application



BT SERIES	CAT NO.		CONDUCTOR RANGE O.D.		DIMENSIONS mm		BOLT DIA
	BT-PP SERIES		MAIN	TAP	A	B	
*BT2-1	BT2-1PP		15	6	111.1	40.5	M10 X 50
BT2-2	BT2-2PP		15	-	412.8	40.5	M10 X 50

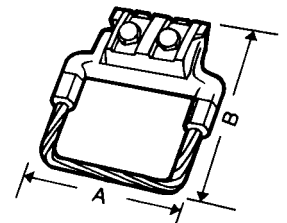
\*Accepts 6mm OD cable from 1 to 3 times  
BT-PP series contain grease

## LINE STIRRUP CLAMP

- Cast high strength aluminium alloy, heat treated
- Individually packed in plastic bags and identified with Catalogue No. and cable range
- Tinned stranded copper stirrup is compression crimped into the connector body
- Incorporates anodised aluminium nuts and bolts
- Bolts are located in retaining channels to prevent slip during installation
- Features the combination of a parallel groove clamp and a line stirrup clamp, enabling copper taps to be made at bridging locations.

Application – connection of copper conductors to aluminium mains

- LS-PP Series pre-packed with jointing compound
- LS-PPSS Series pre-packed with jointing compound and with Stainless Steel hardware



6

LS SERIES	CAT NO.			CONDUCTOR RANGE O.D. MAIN AL OR ACSR	DIMENSIONS mm		BOLT DIA
	LS-PP SERIES	LS-PPSS SERIES			A	B	
LS01	LS01PP	LS01PPSS		6-19	76.2	146.1	M10 x 50
LS02	LS02PP	LS02PPSS		6-19	120.7	146.1	M10 x 50



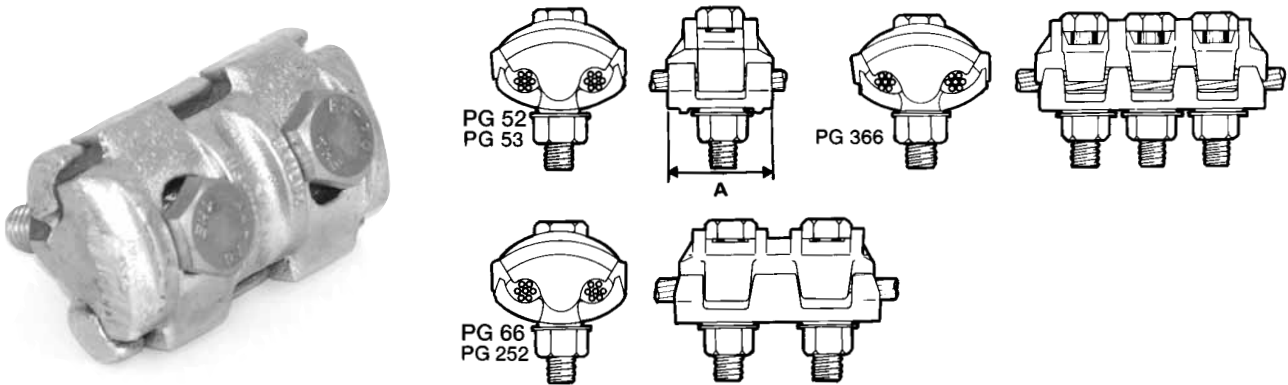
## ELECTRICAL JOINTING COMPOUND

- Seals out air and moisture, therefore minimising oxidation or corrosion and maximising conductivity
- High melt point grease

CAT NO.	NO.	APPLICATION	PART	COLOUR	TUBE SIZE
H2398	1	For bolted palm connections	No Grit	Light Brown (honey colour)	250g

## PARALLEL GROOVE CONNECTORS

- Cast high strength aluminium alloy, heat treated
- Individually packed in plastic bags and identified with Catalogue No. and cable range
- Anodised aluminium nuts and bolts of sufficient length to allow installation without disassembling connector
  - Bolts are located in retaining channels to prevent slip during installation
  - Suitable for the following conductors: ACSR, AAC – conventional or smooth body
- Designed specifically for overhead power line applications
  - PG-PP Series pre-packed with jointing compound
  - Stainless steel, electro-tinned or galvanised bolts available for approved minimum order quantities



PG SERIES	CAT NO. PG-PP SERIES	NO. BOLTS	CONDUCTOR O.D.		LENGTH A mm	BOLT
			MAIN (MAX O.D.)	TAP (MIN O.D.)		
PG52	PG52PP	1	12	3	37	M10 x 50
PG53	PG53PP	1	19	9	55	M12 x 65
PG66	PG66PP	2	19	9	92	M12 x 65
PG252	PG252PP	2	12	3	72	M10 x 50
PG366	PG366PP	3	19	9	111	M12 x 65

## BI-METAL PG CLAMPS - DOUBLE & TRIPLE BOLT

- For aluminium main conductors and copper tap-off conductors
- Pressure pad, hex. head screws and nuts
- Clamp body and pressure pad is made of high strength aluminium alloy with compressed bi-metallic sheet for copper tap-off
- Screws: DIN 933 – Steel, grade 8.8 hot-dip galvanised
- Nuts: DIN 934 –Steel, grade 8, hot-dip galvanised

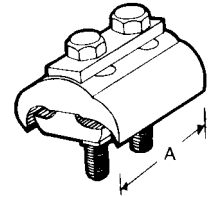


CAT NO.	CONDUCTOR CROSS SECTION		CONDUCTOR RANGE O.D.		LENGTH A mm	BOLT
	ALUMINIUM mm <sup>2</sup>	COPPER mm <sup>2</sup>	ALUMINIUM mm <sup>2</sup>	COPPER mm <sup>2</sup>		
WG3909	16-70	6-50	5.1 to 11.7	2.7 to 9.0	40	2 x M8 x 40
WG3911	12-150	90-95	6.3 to 15.7	4.1 to 12.5	49	2 x M8 x 45
WG3913	35-185	35-185	7.5 to 17.5	7.5 to 17.5	65	2 x M10 x 60
WG3915	95-240	70-185	12.5 to 21.0	10.5 to 17.6	105	3 x M10 x 60

## ALUMINIUM PG CLAMPS – DOUBLE BOLT



- Suitable for aluminium conductors
  - Pressure pad, 2 hex, head screws and nuts
- Materials:
- Clamp body and pressure pad – high strength aluminium alloy heat treated
  - Screws: DIN 933 – steel, grade 8.8 hot-dip galvanised
  - Nuts: DIN 934 – Steel grade 8, hot-dip galvanised

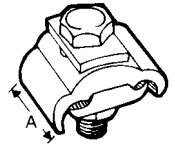


CAT NO.	CROSS SECTION mm <sup>2</sup>	CONDUCTOR RANGE O.D.	LENGTH A mm	BOLTS
WG3587	16-35	5.1 to 7.5	41	2 x M7 x 30
WG3588	16-50	5.1 to 9.0	45	2 x M8 x 40
WG3589	16-70	5.1 to 10.5	49	2 x M8 x 45
WG3590	16-95	5.1 to 12.5	55	2 x M8 x 45
WG3591	16-120	5.1 to 14.0	55	2 x M8 x 50
WG3932	25-150	6.3 to 15.7	61	2 x M10 x 50
WG3593	38-185	7.5 to 17.5	65	2 x M10 x 60
WG3594	70-240	10.5 to 20.2	70	2 x M10 x 70



## COPPER PG CLAMPS – SINGLE BOLT

- Suitable for copper conductors
  - Pressure pad, 1 hex, head screw and nut
- Materials:
- Clamp body and pressure pad – electrolytic copper, E-Cu F30
  - Screws: DIN 933 – bronze, having a minimum tensile strength of 60 kp/mm<sup>2</sup>
  - Nuts: DIN 934 – copper, having a minimum tensile strength of 60 kp/mm<sup>2</sup>

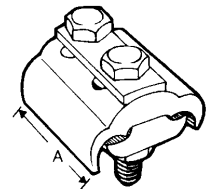


CAT NO.	CROSS SECTION mm <sup>2</sup>	CONDUCTOR RANGE O.D.	LENGTH A mm	BOLTS
WG3005	2.5-16	1.8 to 5.1	16	M5 x 20
WG3006	4-25	2.3 to 6.3	18	M6 x 25
WG3007	6-35	2.7 to 7.5	20	M7 x 30
WG3008	6-50	2.7 to 9.0	22	M8 x 35

**6**


## COPPER PG CLAMPS – DOUBLE BOLT

- Suitable for copper conductors
  - Pressure pad, 2 hex, head screws and nuts
- Materials:
- Clamp body and pressure pad – electrolytic copper, E-Cu F30
  - Screws: DIN 933 – bronze, having a minimum tensile strength of 60 kp/mm<sup>2</sup>
  - Nuts: DIN 934 – copper, having a minimum tensile strength of 60 kp/mm<sup>2</sup>



CAT NO.	CROSS SECTION mm <sup>2</sup>	CONDUCTOR RANGE O.D.	LENGTH A mm	BOLTS
WG3025	2.5-16	1.8 to 5.1	24	M5 x 25
WG3026	4-25	2.3 to 6.3	30	M7 x 25
WG3027	6-35	2.7 to 7.5	32	M7 x 30
WG3028	6-50	2.7 to 9.0	35	M8 x 40
WG3029	6-70	2.7 to 10.5	38	M8 x 40
WG3030	16-95	5.1 to 12.5	40	M8 x 40
WG3032	16-150	1.5 to 15.7	50	M10 x 50

## SPLIT BOLT CONNECTORS

- For tapping or joining aerial hard drawn or insulated copper conductors
  - Made from hard grade, high conductivity brass
- Captive saddle applies distributed pressure to conductors to ESAA specifications



	CAT NO.		ESSA TYPE	MAX CONDUCTOR SIZE		SLOT WIDTH mm
	NATURAL BRASS	ELECTRO TINNED		AREA mm <sup>2</sup>	OVERALL DIA.	
SB22		SB22ET	A	16	5.10	5.3
SB24		SB24ET	B	35	7.65	8.3
SB25		SB25ET	C	70	10.70	10.9
SB26		SB26ET	D	95	12.90	12.9
SB28		SB28ET	E	185	18.50	18.5

