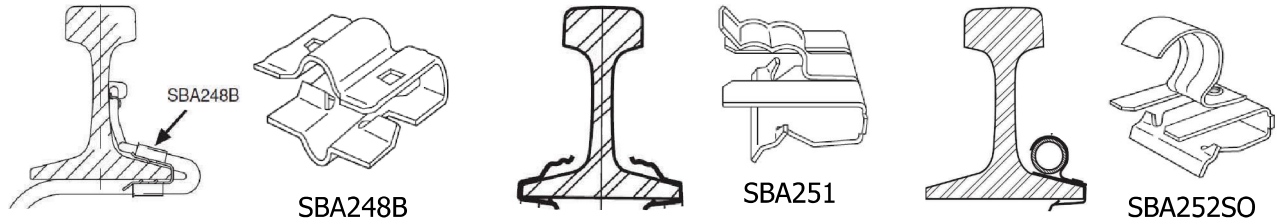


RAIL CABLE CLIPS



Part Number	Max Cable	Packaging
SBA248B	9.5mm (3/8)	50
SBA251	9.5mm (3/8)	50
SBA252S0	19.1mm (3/4)	50



GLUE CONCRETE RAIL CLIP

- Hi performance new generation flexible glue.
- Perfect adhesion to concrete, steel, stainless steel.
- Can be used in water
- Application temperature: -40°C to +160°C.



Part No	Description	Cable	Base Plate	Clips Plate	Total Clips
GCHSC67	KIT GC-HSC67	6-7mm	30	4	120
GCHSC78	KIT GC-HSC78	7-8mm	30	4	120
GCHSC89	KIT GC-HSC89	8-9mm	30	4	120
GCHSC910	KIT GC-HSC910	9-10mm	30	4	120
GCHSC1011	KIT GC-HSC1011	10-11mm	30	4	120
GCHSC1214	KIT GC-HSC1214	12-14mm	30	4	120
GCHSC1518	KIT GC-HSC1518	15-18mm	30	3	90
GCHSC1924	KIT GC-HSC1924	19-24mm	30	3	90
GCHSC2530	KIT GC-HSC2530	25-30mm	30	2	60

